

EA APPROVED METROLINX PARKING FACILITY AREA

PARKING AREA (0.17 ha)  
14 ACCESSIBLE PARKING AND 8 PPUDO SPACES

PARKING AREA (1.0 ha)  
368 PARKING SPACES

PARKING AREA APPROX. 25 PARKING SPACES  
2 ACCESSIBLE PARKING

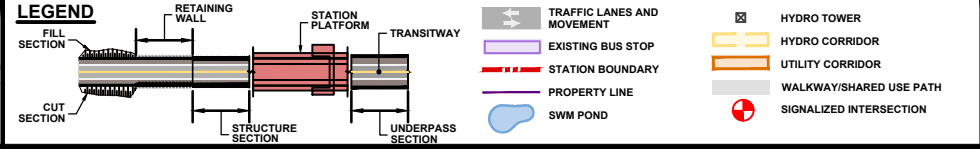
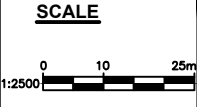
FUTURE STATION PARKING AREA AND/OR BUS STORAGE EXPANSION (1.57 ha)

AREA FOR FUTURE MAINTENANCE & STORAGE FACILITY AND/OR OTHER 407 TRANSITWAY USES (5.67 ha)

TOTAL AREA 3.55 ha

**REGULAR PARKING = 368 SPACES**  
**ACCESSIBLE PARKING = 14 SPACES**  
**PPUDO = 8 SPACES**

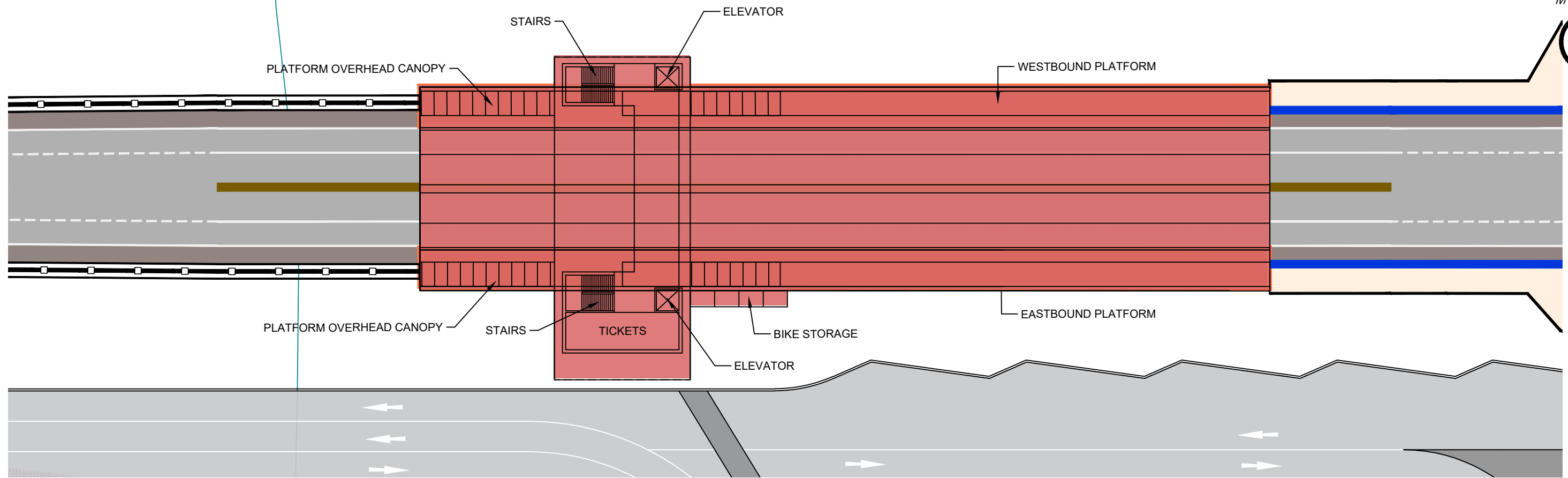
DRAWING NAME: J:\T047224 ON-MTO 407 TRANSITWAY WC TO BRANTLINX General\03 - Drawings\7 - Stations\Station layout\407 TW4 - Bronte Rd Station.dwg  
CREATED: Jul 16, 2020 4:56pm  
MODIFIED: Jul 16, 2020 4:56pm



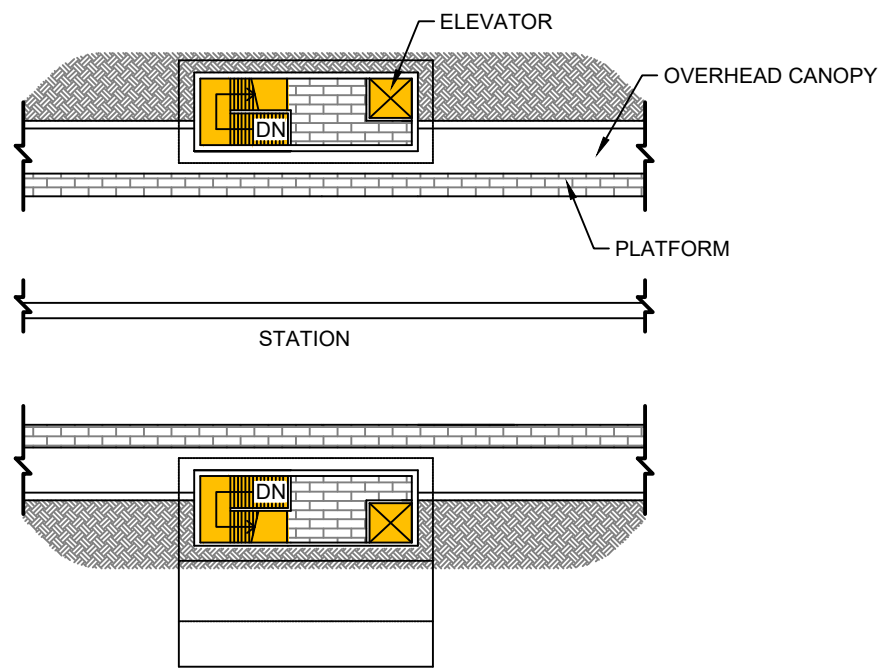
**407 TRANSITWAY**  
**WEST OF BRANT STREET TO WEST OF HURONTARIO STREET**  
**G.W.P. 16-20003, CA 2016-E-0038**  
**STATIONS**

**DRAWING SET**  
**BRONTE RD. STATION**

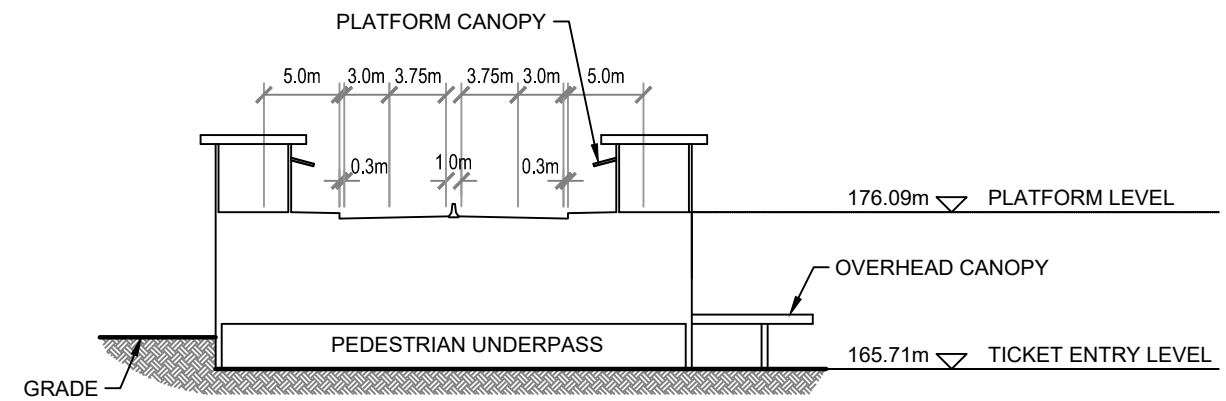
**PLATE**  
**S-3A**  
**DATE**  
15/11/2019



**GROUND FLOOR PLAN**  
Scale 1:500



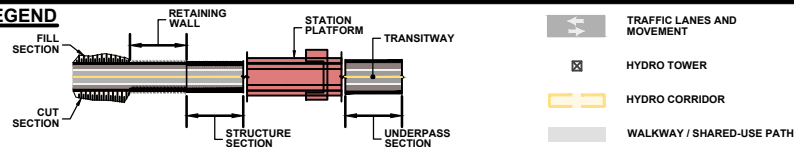
**PLATFORM LEVEL PLAN**  
Scale 1:500



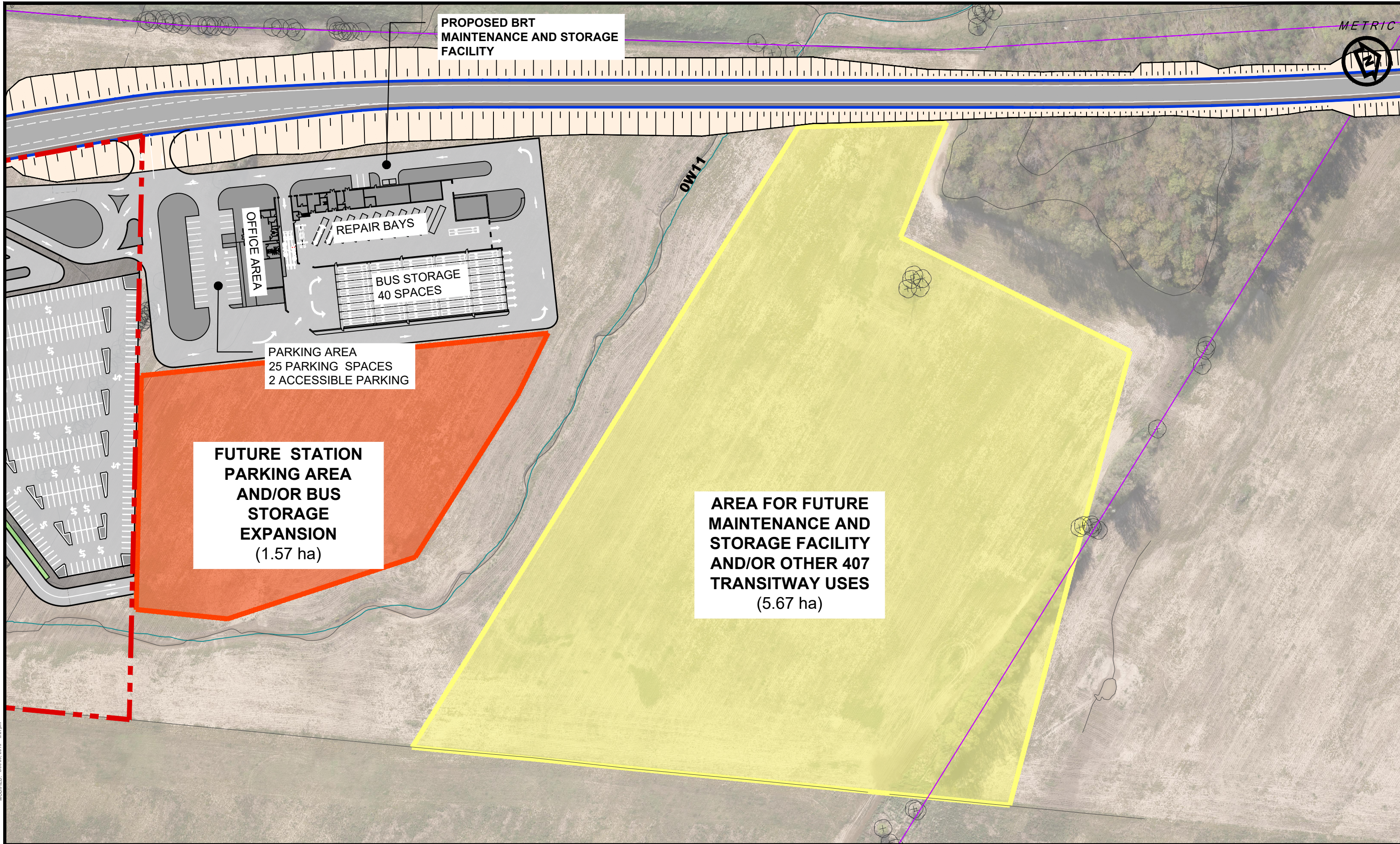
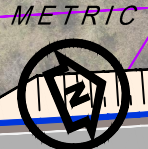
**SECTION A-A**  
Scale 1:500

DRAWING NAME: J:\TOR\76294 ON-MTO 407 TRANSITWAY WCTO BRANTTTT'S General\03 - Drawing\07 - Stations\Station layouts\407 TW4 - Bronte Rd Station.dwg  
CREATED: RM3  
MODIFIED: Dec 09, 2019 3:17pm

**LEGEND**



PROPOSED BRT  
MAINTENANCE AND STORAGE  
FACILITY



PARKING AREA  
25 PARKING SPACES  
2 ACCESSIBLE PARKING

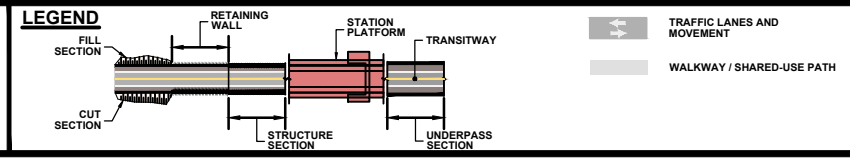
**FUTURE STATION  
PARKING AREA  
AND/OR BUS  
STORAGE  
EXPANSION  
(1.57 ha)**

**AREA FOR FUTURE  
MAINTENANCE AND  
STORAGE FACILITY  
AND/OR OTHER 407  
TRANSITWAY USES  
(5.67 ha)**

DRAWING NAME: J:\TOR\76284 ON-MTO 407 TRANSITWAY WC TO BRANTTTS General\03 - Drawings\7 - Stations\Station layouts\407 TW4 - Bronte Rd Station.dwg  
CREATED: RM3  
MODIFIED: Dec 09, 2019 3:27pm



SCALE  
1:2000



**407 TRANSITWAY**  
WEST OF BRANT STREET TO WEST OF HURONTARIO STREET  
G.W.P. 16-20003, CA 2016-E-0038

DRAWING SET  
MAINTENANCE  
AND STORAGE  
FACILITY

PLATE  
**S-3C**  
DATE  
15/11/2019